



10-12

CURRICULUM

SUBJECT SELECTION GUIDE

2024



This Curriculum Handbook is intended to assist you in the very important process of choosing subjects and providing information about the broad range of subject offerings at Tenison Woods College. It contains an overview of the process you will work through and information about the pattern of subjects you must complete in order to achieve your South Australian Certificate of Education.

You are strongly advised to make use of the many resources available to you as you work through this process. In addition to the information presented in this Handbook you may also access the Senior School Subject Selection Team by phone, email or in a meeting (please see below). Learning Area Coordinators are also available for subject specific information.

Senior School Subject Selection Team Contact:	Phone:	Email:
Kate Carroll, Head of Senior School	8724 4650	carrk@tenison.catholic.edu.au
Scott Dickson, Director of Learning	8724 4650	scott.dickson@tenison.catholic.edu.au
Jody Elliott, Careers Coordinator	8724 4650	ellij@tenison.catholic.edu.au
Sharon Brodie, VET Coordinator	8724 4616	brods@tenison.catholic.edu.au
Austin Jones, SACE Coordinator	8724 4658	jonea@tenison.catholic.edu.au
Suzanne Pepe, Senior School Pathways Support Coordinator	8724 4654	pepes@tenison.catholic.edu.au
Your Subject, Homegroup and Pathways Centre teacher	8724 4650	prc@tenison.catholic.edu.au

SUBJECT SELECTION PROCEDURE

The subject counselling process incorporates the subject selection information sessions, career Pathways Expo, subject selection and pathways counselling, intensive pathways counselling for students who may need it (eg VET students, accelerated students) and some re-counselling in Term 4 and during the academic year.

SUBJECT SELECTION PROCESS:

- STEP 1**

Using the Curriculum Handbook, you need to choose the subjects you would like to study and complete your subject selection form under the guidance of your teachers, parents and the Pathways Team. You should also carefully consider:

 - Your ambitions and possible future career choices
 - Your capabilities and performance in subjects you are currently studying
 - Your interest in the content of the subjects you are currently studying
 - What you learn in Year 10 Exploring Identities and Futures about your suitability to particular career paths
 - The SACE pattern
 - Information gathered at the Tenison Woods College Curriculum Information Sessions, Pathways and Careers Expo, TAFE and University Open Days
 - Prerequisites and other requirements of tertiary courses, including those offered at interstate institutions
 - Advice from the Career Coordinator, SACE Coordinator, VET Coordinator, Head of School, Pathways Centre teachers and your subject teachers
- STEP 2**

Once you have chosen the subjects that you think you would like to study and entered them on your subject selection form, you must ask your current subject teachers if they feel you are a suitable candidate for that subject at that level.
- STEP 3**

Students will enter subject selections on the Edval Web Choice form.
- STEP 4**

At the subject counselling interview, you will have the opportunity to discuss the suitability of your subject choices in light of your career ambitions, your capabilities, your achievement in your current subjects, etc. Your parents are encouraged to attend this interview with you.
- STEP 5**

You will later be advised as to whether you are able to study your first choice of subjects at the next year level. Should subject clashes or class numbers prevent this from being possible you will be invited to a further interview where your alternative choices will be discussed.

A NUMBER OF VERY IMPORTANT MATTERS NEED TO BE CONSIDERED BEFORE SELECTION OF SUBJECTS ARE MADE

STEP 1

READ THROUGH THE CURRICULUM GUIDE THOROUGHLY:

- Read the information provided for each subject
- Note the minimum requirements and/or recommendations contained within each course description
- Examine each flow chart to see where subjects lead and what minimum requirements apply at each level
- Make sure that you get clarification about any aspect you do not understand
- Start building your subject selection using the SACE Course Planner [click here](#)

STEP 2

BE REALISTIC, CONSIDER THE FOLLOWING:

- Your ability to cope with the academic content of the subjects you plan to choose
- Your interest in the subjects
- Your proven performance in the past
- Your level of commitment
- Your needs
- What your reports and exam results show

STEP 3

TALK TO OTHERS:

- Your teachers are in the best position to advise you about your abilities
- If you need further information about what a subject involves, talk to a teacher who teaches that subject
- Talk to older students about their experiences
- Discuss with your parents

STEP 4

BE INFORMED

Subject choices may be difficult but must be based on as much information as possible.

Further information can be obtained by researching the requirements of occupations or courses of study that are of interest to you.

The following are possible sources of help:

- Tertiary institution handbooks and websites
- TAFE Information Centre
- Career literature available at school
- Career Reference Centre
- Friends/relatives/employers/employees who work in areas that interest you
- Careers Coordinator
- [Tenison Woods College Careers website](#)

The Pathways Model adopted by the Senior School at Tenison Woods College has been developed to offer innovative educational programs to our students. By opening up the curriculum across the senior years, students will be able to access learning which will cater to their individual needs.

WHAT IS A LEARNING PATHWAY?

A learning pathway enables individual students to navigate their learning, skill development and life experiences through mainstream education, flexible learning and vocational training options. There are many learning pathways students can explore depending on their future aspirations, learning interests, skills and abilities.

The Senior School understands that each student's learning pathway will be unique and personalised and seeks to ensure that students have the opportunities to experience a learning program which caters to their learning needs.

WHY A LEARNING PATHWAYS MODEL?

Learning pathways will 'open up' the curriculum by enabling students to access learning programs within, above and below their year level across the senior years. Students will be able to access learning which will cater to their individual needs.

In this learning environment, students will develop the agency to self-manage, become lifelong learners and to contribute and engage positively in our global community.

Research indicates that students who select a learning pathway that is relevant to their learning needs are more likely to engage positively with learning in the senior years.

In the Senior School, a broad range of Year 10, Stage 1 and Stage 2 subjects are available which support students to achieve their future goals. Whether it is preparing for future tertiary based education, TAFE and/or apprenticeship/traineeships, employment or the defence forces, students will have the opportunities to develop the knowledge, skills and competencies to support their future aspirations and the areas they are keen to enter.

The learning pathways at Tenison Woods College are:

- Tertiary Education Pathway
- Vocation Pathway
- Flexible Learning Pathway

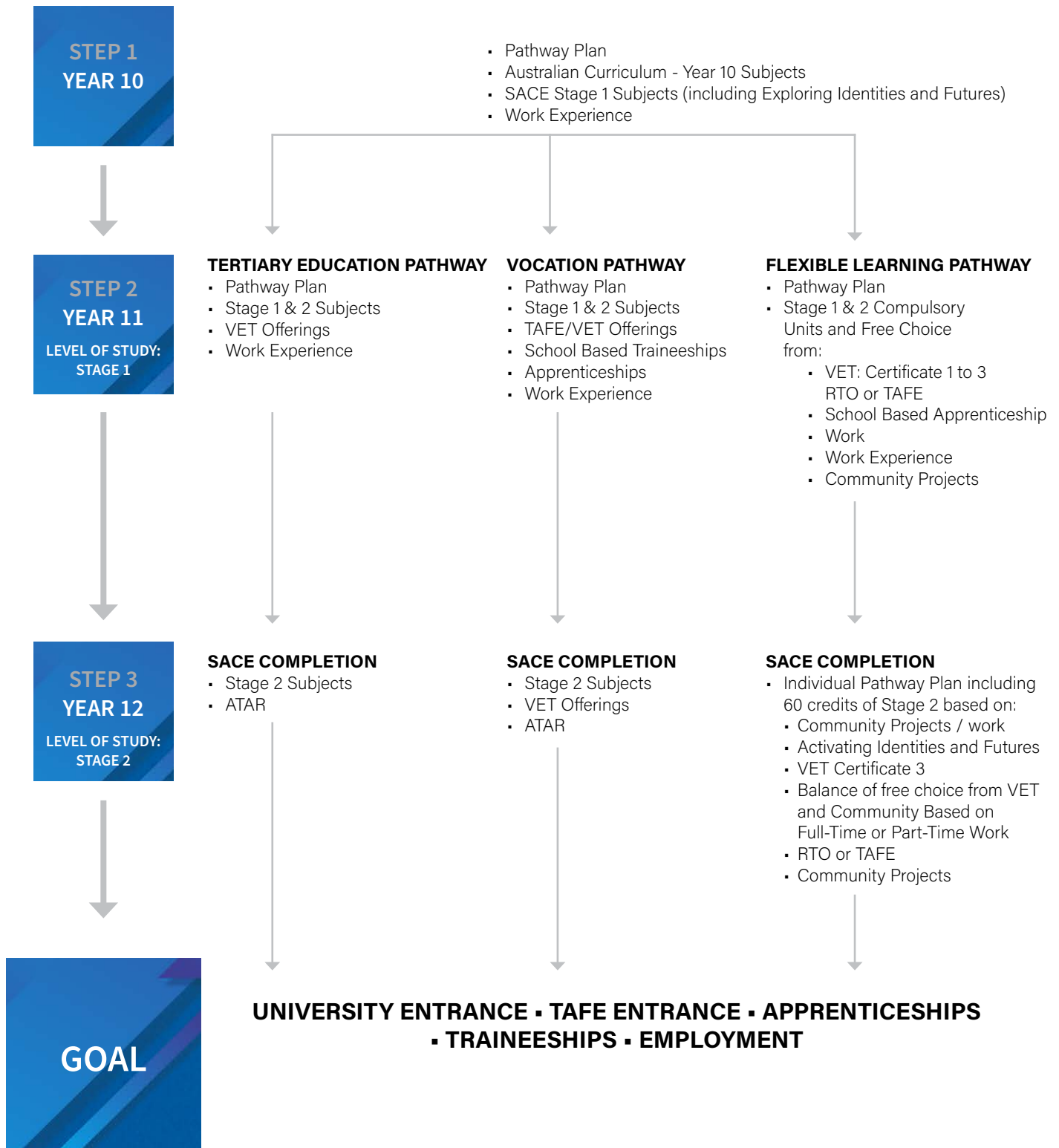
ACCELERATION IN SUBJECTS

The Learning Pathways Model in the Senior School will enable students to accelerate their learning in subjects they may have strengths in or are ready to engage with in the year level above their own. We recognise that students learn at varied rates and seek to create opportunities for students to engage in learning programs that support their learning needs.

Acceleration can occur in all subjects if the student can demonstrate that they are capable of studying above their year level. The Senior School values learner readiness and understands that students learn at varied rates.

Students who would like to study a subject above their year level must acquire a recommendation from the Learning Area Coordinator for the relevant subject and the Head of Senior School - this will be decided on an individual basis.

LEARNING PATHWAYS MODEL IN THE SENIOR SCHOOL



TOTAL SACE CREDITS ACQUIRED THROUGH TENISON WOODS COLLEGE PATHWAYS

This summary may assist students at looking at the required credits for SACE completion in an alternative way. Together with the SACE Course Planner, we hope this information assists you with making well informed choices. Students at Tenison Woods College work to achieve an ample amount of SACE credits as shown below.

STAGE 1 YEAR 10/11

Year 10 Exploring Identities and Futures (EIF) (compulsory) 10 credits
Year 11 Religious Education (compulsory)10 credits

YEAR 11 SEMESTER 1:

English subject (compulsory literacy) 10 credits
Mathematics subject (compulsory numeracy) 10 credits
Subject selection 1 10 credits
Subject selection 2 10 credits
Subject selection 3 10 credits
Subject selection 4 10 credits

YEAR 11 SEMESTER 2:

English subject (compulsory literacy) 10 credits
Mathematics subject 10 credits
Subject selection 1 10 credits
Subject selection 2 10 credits
Subject selection 3 10 credits
Subject selection 4 10 credits

**Total Stage 1 Credits for Year 11 completion at Tenison Woods College: 140
(130 required by SACE)**

STAGE 2 YEAR 11/12

Activating Identities and Futures (AIF) (compulsory) 10 credits
Religious Education (compulsory) 10 credits
Subject selection 1 (compulsory) 20 credits
Subject selection 2 (compulsory) 20 credits
Subject selection 3 (compulsory) 20 credits
Subject selection 4 20 credits

**Total Stage 2 Credits for Year 12 completion at Tenison Woods College: 100
(70 required by SACE)**

TAFE course SACE credits will vary depending on which course, whether it is Cert I, II or III.

TAFE/VET courses will contribute to SACE credits depending on the level of course studied and therefore will substitute a subject selection at Stage 1 or Stage 2.

For compulsory subjects, a C grade (Stage 1) or C- grade (Stage 2) minimum is required to gain these credits.

For those students requiring an ATAR, this is calculated based on a minimum of 90 credits (4.5 subjects) at Stage 2 of Tertiary Admission Subjects. * Some TAFE course can count towards an ATAR also.

WHAT IS THE SACE?

Students who successfully complete their senior secondary education are awarded the South Australian Certificate of Education (SACE).

The SACE is an internationally recognised qualification that paves the way for young people to move from school to work or further training and study. The SACE has been introduced to ensure that students gain the skills and knowledge they need for the future, as citizens and employees.

To gain the SACE certificate students must earn 200 credits from Year 10-12. Ten credits are equivalent to one semester or six months' study in a particular subject or VET course.

The Certificate is based on two stages of achievement: Stage 1 (normally undertaken in Year 10/11) and Stage 2 (Year 12).

WHAT ARE THE REQUIREMENTS OF THE SACE?

Students must demonstrate satisfactory achievement (C grade or higher for Stage 1 and C- grade or higher for Stage 2) in the following courses:

- 10 credits of Exploring Identities and Futures (Stage 1)
- 10 credits of Mathematics / Numeracy courses (Stage 1 or 2)
- 20 credits of English / Literacy courses (Stage 1 or 2)
- 10 credits of Activating Identities and Futures (Stage 2)
- 60 credits of any additional Stage 2 courses

In addition to these compulsory requirements, students must gain a further 90 credits (usually at Stage 1), totalling 200 SACE credits.

Following are the Tenison Woods College requirements that will allow students to achieve their SACE:

YEAR 10

In Year 10 at Tenison Woods College, it is compulsory for students to study the following courses:

- Exploring Identities and Futures (must achieve a C grade or higher)
- Religious Education
- Mathematics or General Mathematics or Essential Mathematics or a Mathematics course
- English
- Science (4 x term electives)
- History
- Physical Education

In addition, students may choose from a range of Year 10 or SACE Stage 1 electives.

YEAR 11

In Year 11 at Tenison Woods College, students normally study SACE Stage 1 courses. It is compulsory for students to study the following courses:

- Two Mathematics or Numeracy semester courses (must achieve a C grade or higher in at least one of these)
- Two English or Literacy semester courses (must achieve a C grade or higher in both of these)
- Religion Studies (10 SACE credits spread over one year)

In addition, students may choose from a range of SACE Stage 1 and 2 subjects and VET courses.

YEAR 12

In Year 12 at Tenison Woods College, students normally study SACE Stage 2 courses. It is compulsory for students to study the following courses:

- Activating Identities and Futures (must achieve a C- grade or higher)
- Three 20 credit Stage 2 courses (must achieve a C- grade or higher in all of these)
- Spiritualities, Religion and Meaning (Religion)

In addition, students may choose from a range of SACE Stage 1 and 2 subjects and VET courses (subject to tertiary entrance requirements if applicable).

TERTIARY EDUCATION PATHWAY

The Tenison Woods College Senior School offers a broad range of TAS (Tertiary Admission Subjects) that lead to possible degree pathways.

Students who complete the SACE are eligible for university entry, provided they meet certain requirements. For university entry, students need to achieve 90 credits at Stage 2, including three 20-credit Stage 2 subjects. The final Stage 2 credits can be gained in a variety of ways defined by the universities, including other Stage 2 SACE subjects offered at the College. Universities also specify required subjects for some of their courses. The most effective entry pathway to University is through the attainment of an ATAR.

Students are guided through the subject selection process to ensure that pre-requisite subjects are chosen in line with their study and career goals. Universities also offer a variety of alternative pathways for those students who do not achieve SACE or the required ATAR. When this occurs, students are assisted to identify the most appropriate pathway. Full details of university and TAFE entry requirements are included in the Tertiary Entrance Booklet. Go to the SATAC website for more information: <http://www.satac.edu.au/>

TAFE SA recognises the SACE as meeting the entry requirements for most of its courses. It also considers a variety of other qualifications and experiences in its entry and selection processes. At all times, students are guided through the identification of study pathways and application processes.

OUR PATHWAYS APPROACH

At Tenison Woods College, every learner has a place, every learner has a pathway, every learner shines, and we know that this is our daily challenge and our daily celebration."

David Mezinac | Principal

COMMUNITY LEARNING

The SACE Board recognises that learning doesn't just happen in the classroom, but in all kinds of settings.

Students are able to earn SACE credits for community learning in two ways – Community-developed Programs and Self-directed Community Learning. Community-developed Programs include, for example, the Australian Music Examinations Board, the Duke of Edinburgh's Award and the SA Country Fire Service. Program details are updated as new course information becomes available. Self-directed Community Learning is gained through informal community activities such as coaching a sports team, being the primary carer of a family member, or leading an environmental project in the community.

Students will need to provide evidence of their learning for assessment so that the SACE Board can recognise these other kinds of community learning. Up to 90 credits of community learning at Stage 1 and/or Stage 2 can count towards the completion requirements of the SACE. Students cannot count the same community learning more than once towards SACE completion.

For example, a student who has used part of the Queen's Guide Award in a SACE subject, such as Community Studies or Physical Education, cannot then count the same award as community learning.

COMMUNITY STUDIES

Community Studies is an alternative option that allows students to learn in a community context and interact with teachers, peers, and community members. They decide the focus of their community activity, which begins from a point of personal interest, skill, or knowledge. By setting challenging and achievable goals in their community activity, students enhance their knowledge and understanding in a guided and supported learning program. They develop their capacity to work independently and to apply their skills and knowledge in practical ways in their community.

At Stage 2 level, successful completion of this course will give students SACE credits towards the compulsory 60 credit Stage 2 requirement. Please note that Community Studies is not eligible to be counted towards an ATAR.

COMMUNITY CONNECTIONS

Community Connections is a 10-credit subject or a 20-credit subject at Stage 2. It provides opportunities for success to students who have an interest in a particular SACE Stage 2 subject, but who choose to demonstrate their learning in alternate ways or through a personal connection with the subject area. The subject values the student's interests and strengths, enables curiosity, and empowers them to become independent self-directed learners who are willing to try different approaches in different contexts, and discover new ways of thinking and learning.

At Stage 2 level, successful completion of this course will give students SACE credits towards the compulsory 60 credit Stage 2 requirement. Please note that Community Connections is not eligible to be counted towards an ATAR.

HOW THIS PATHWAY WORKS

The Pathways Centre at Tenison Woods College supports an alternative education pathway option for young people seeking to complete their South Australian Certificate of Education (SACE, Year 11-12). As part of the educational provision offered at Tenison Woods College, the Pathways Centre offers flexibility that enables students to manage their work, study and wellbeing to achieve academic success. Inspired by the model of Catholic Mission expressed by the tradition of the founders, notably Saint Mary of the Cross MacKillop, this pathway caters specifically for students individual learning needs.

The Pathways Centre provides an individual student led focus, recognising prior learning and enhancing skills and knowledge for future participation in the community. This involves making connections to students' worlds in the learning process, recognising broader learning, such as continued participation in sport, music or other community activity and acknowledging the need to meet the pastoral needs of students.

Each student has a mentor who oversees their educational program. This mentor works with the student to develop an individualised curriculum plan designed to meet the student's specific needs and aspirations. The Centre is also supported by an Education Support Officer to assist students with their learning. Students spend between two and five days per week in the Pathways Centre in an independent learning workspace, negotiating attendance times based around their work/TAFE/wellbeing needs.

Students attending TAFE can also use these credits towards their SACE. Generally, Certificate II courses work towards Stage 1 and Certificate III towards Stage 2.

Stage 1:

Exploring Identities and Futures (EIF)
Essential Mathematics
Essential English
Integrated Learning
Community Studies
Self Directed Community Learning

Stage 2:

Community Studies / Community Connections
Essential English
Workplace Practices
Activating Identities and Futures

IS THIS PATHWAY FOR ME?

Utilising a strength-based approach, the Flexible Learning Pathway (FLP) enables success by empowering and mentoring students to create an individualised learning pathway to achieve their educational and life goals.

This Pathway may be suitable for students wanting to achieve their SACE with:

- Full-time Apprenticeships
- School Based Apprenticeships
- Traineeships
- Part time/Full time Employment
- Individualised Education Plans

Other FLP Offerings Include:

- Coaching young people to success program - links to Career Coordinator
- Referral to School Counsellor
- Support with organising:
 - Training via TAFE, other RTOs
 - Work Experience - OH&S
 - Voluntary Work
 - Paid employment: Links to employment agencies
 - Apprentices/Traineeship - links to VET Coordinator / Group Training Employment (GTE)

SUBJECT SELECTION TIMELINE



Year 9 Subject Counselling Presentation - Pastoral Care Lesson

Students will enter their subjects online by Thursday 10 August



2024 Senior School Subject Counselling (Mount Gambier)



Year 10 Subject Counselling Presentation - Pastoral Care Lesson

Students will enter their subjects online by Thursday 10 August



Millicent Senior School Subject Selections, St. Anthony's Catholic Primary School, Millicent



2024 Pathways and Careers Expo



Penola Senior School Subject Selections, Mary MacKillop Memorial School, Penola



Year 11 Subject Counselling Presentation - Pastoral Care Lesson

Students will enter their subjects online by Thursday 17 August



Senior School Recounselling Commences - Year 10, 11 & 12.



2024 Year 10-12 Subject Selection Forms Returned to PRC Administration



If subjects have not been selected and entered into Webchoice by this date, subject choices may not be guaranteed.

Please contact Head of Senior School, Kate Carroll to discuss your options

LET
YOUR
light
SHINE



- Grace Morgan
- Harry Miles
- Sophie O'Connor
- Max Olivick
- Harriet Opperman
- Me Plesner-Jones
- Ethan Patel
- Nella Perryman
- Mimi Chau Phan
- Tara Porter
- Claudia Prosser-Poria
- James Riley
- Mia Rossouw
- Dalyda Ryan
- Bridget Sharpe
- Samuel Sims
- Lilli Spooner
- Amily Starick
- Riley Stevens
- Eliah Stratford
- Luka Stuberfield
- Sebastian Swynn
- Angela Taylor
- Julia Todaro
- Jan Thomson
- Vine Townsend
- W. Treasider
- Ray Turner
- W. Tunkin
- Kevin Eyle
- W. Whitty
- W. Wright
- Wrightson

Tenison Woods College
Early Learning - Year 12
Co-Educational Catholic College

Corner of Shepherdson Road &
White Avenue, Mount Gambier

t: (08) 8725 5455
e: info@tenison.catholic.edu.au
w: www.tenison.catholic.edu.au

